 eni S.p.A. Exploration & Production Division	Doc. SICS 199 Studio di Impatto Ambientale “Pozzo esplorativo Carpignano Sesia 1”	Allegato 4.7
---	--	--------------

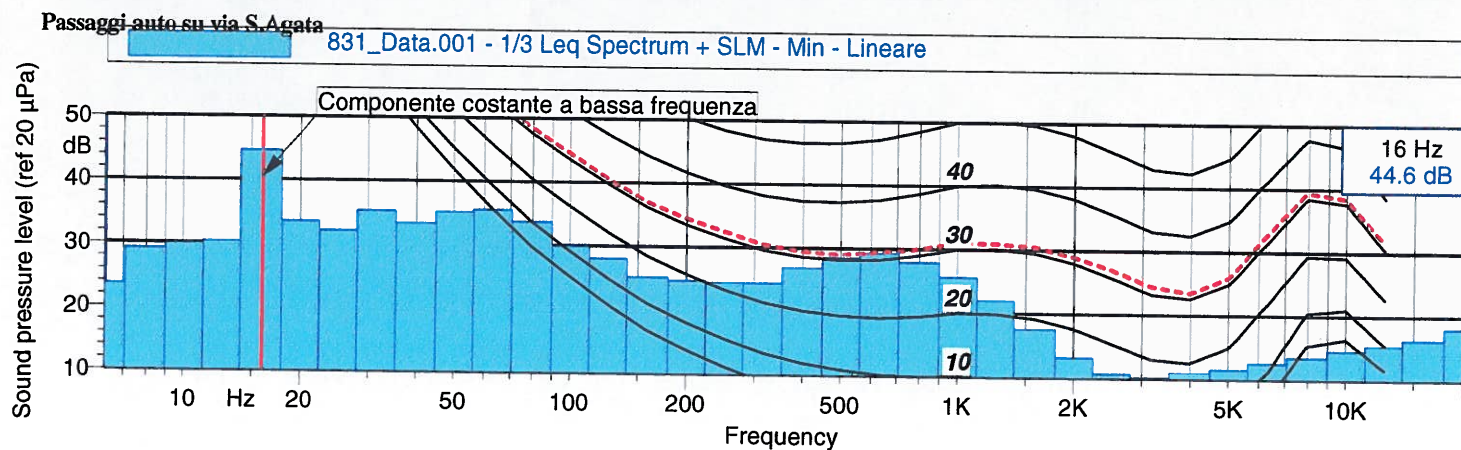
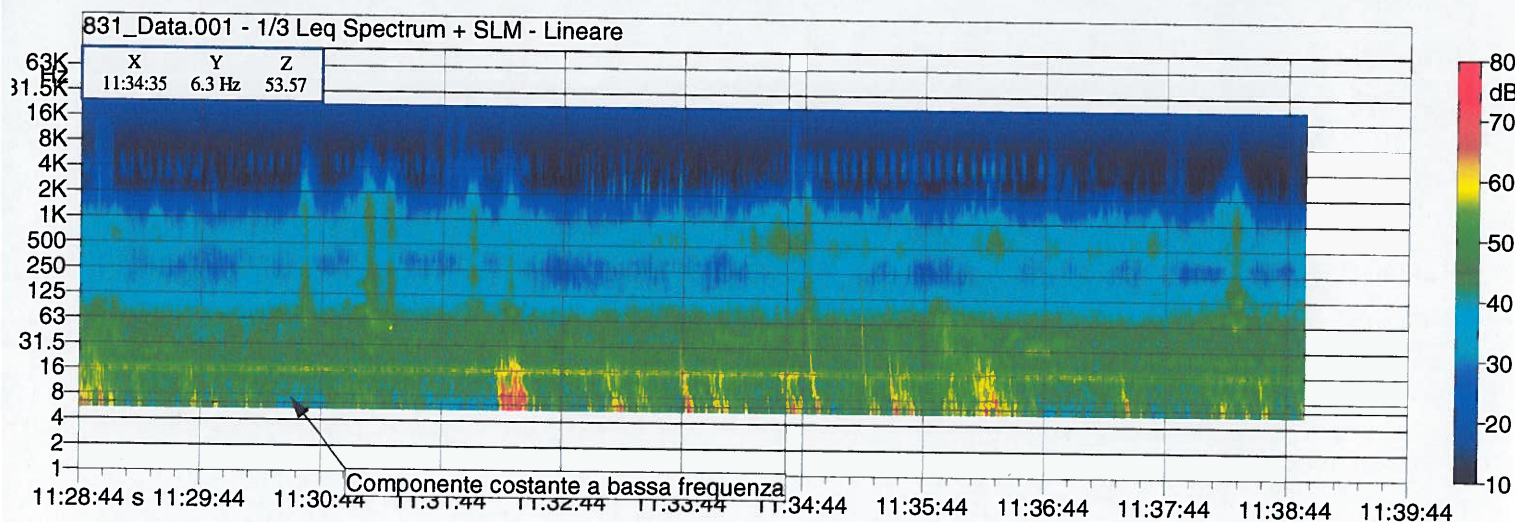
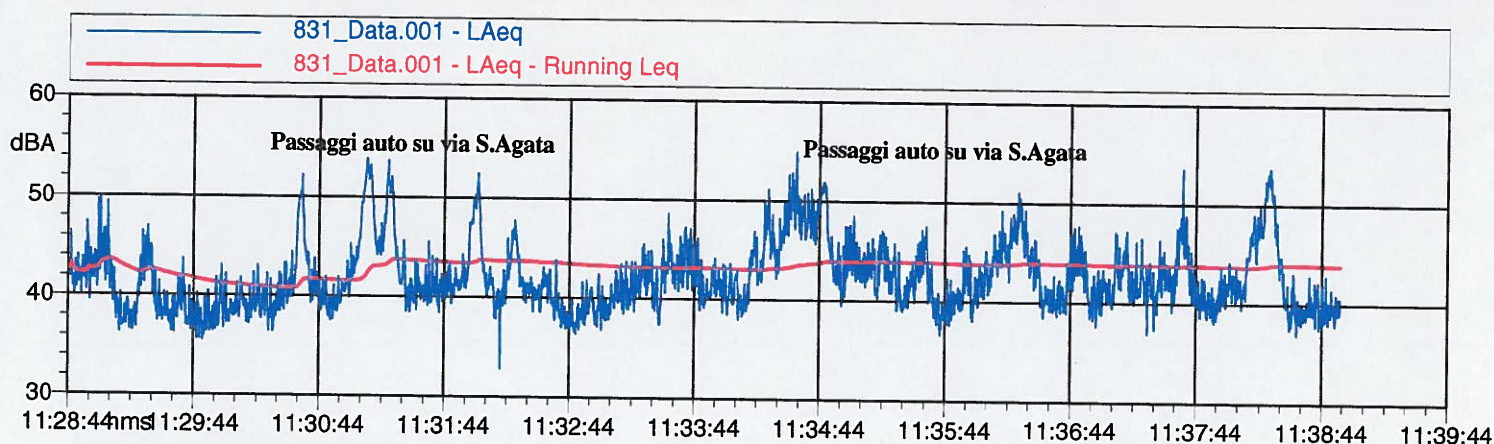
ALLEGATO 4.7

Grafici dei rilievi acustici ante - operam

Nome misura: 831_Data.001 - Postazione Pozzo - R0
 Località: Carpignano Sesia
 Strumentazione: 831 0002106
 Durata misura [s]: 608.9
 Data, ora misura: 27/02/2012 11:28:44

L1: 52.1 dBA L5: 49.2 dBA L90: 38.5 dBA
 L10: 47.0 dBA L50: 41.6 dBA L95: 37.8 dBA

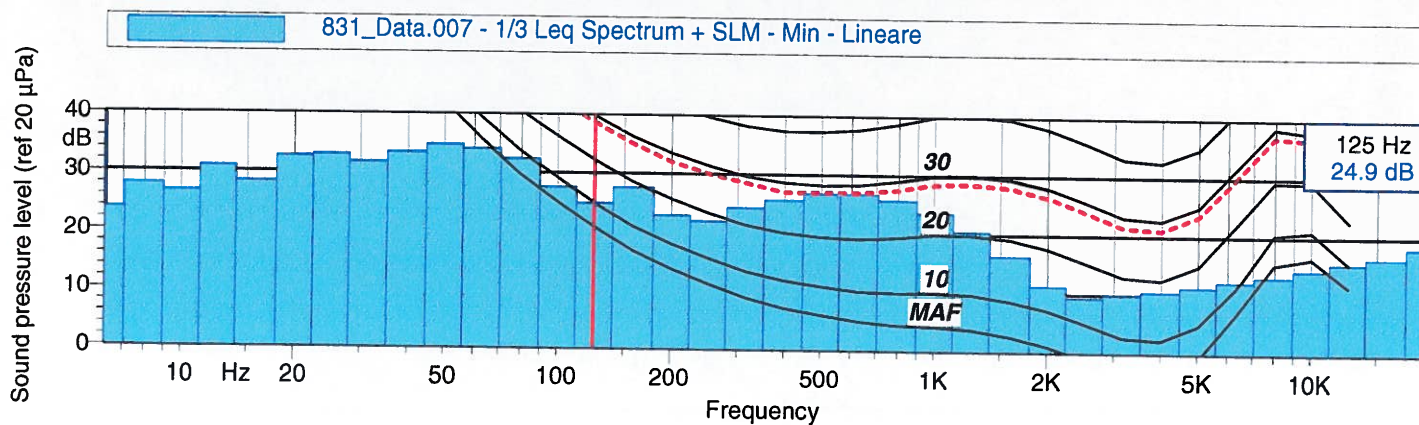
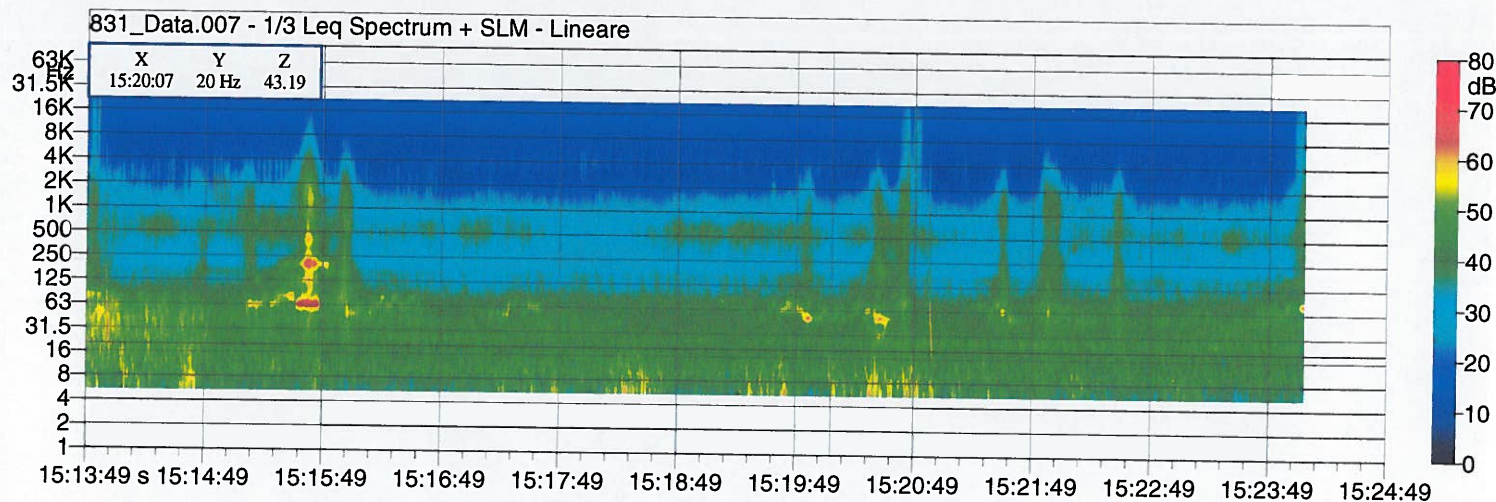
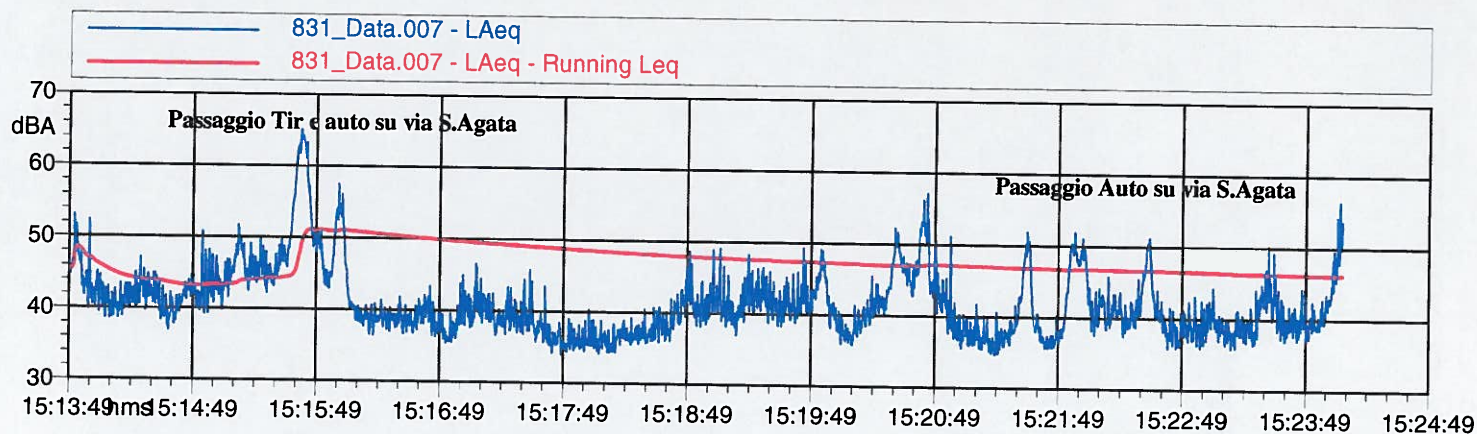
$L_{Aeq} = 43.9 \text{ dB}$



Nome misura: 831_Data.007 - Postazione Pozzo - R0
 Località: Carpignano Sesia
 Strumentazione: 831 0002106
 Durata misura [s]: 618.1
 Data, ora misura: 27/02/2012 15:13:49

L1: 57.6 dBA L5: 49.9 dBA L90: 36.7 dBA
 L10: 47.5 dBA L50: 40.4 dBA L95: 36.1 dBA

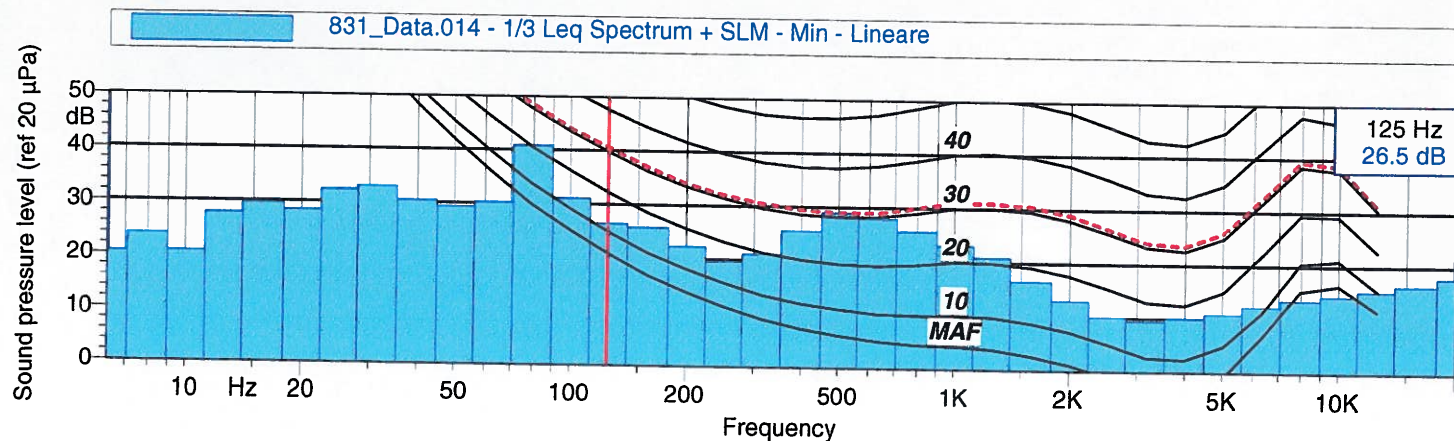
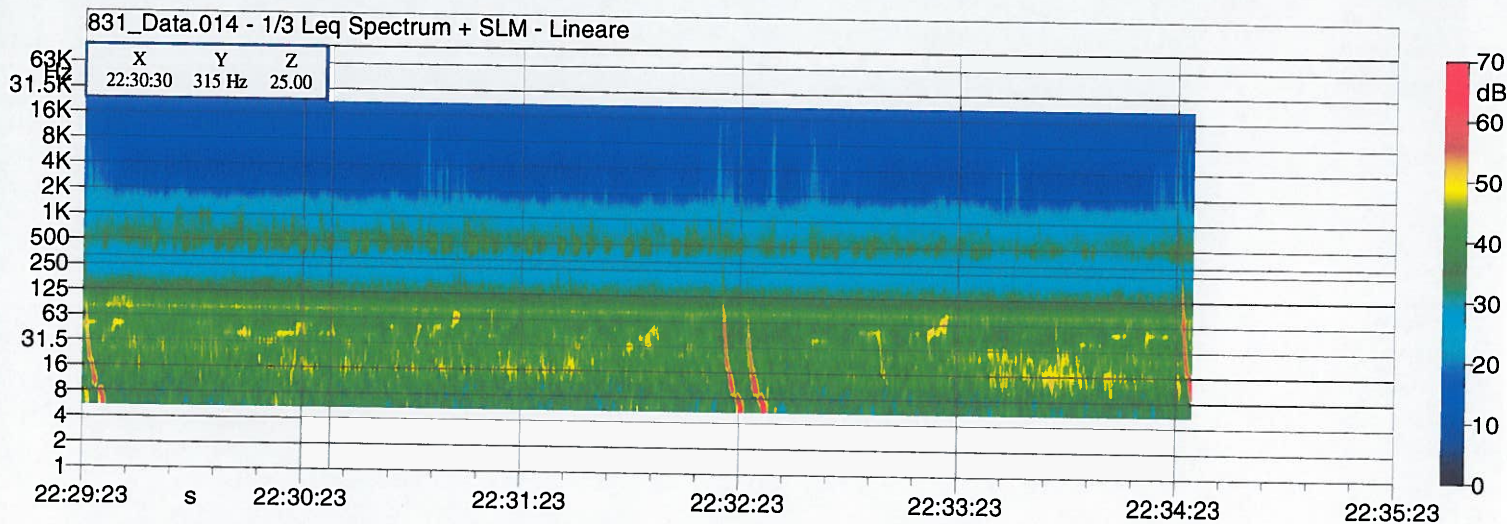
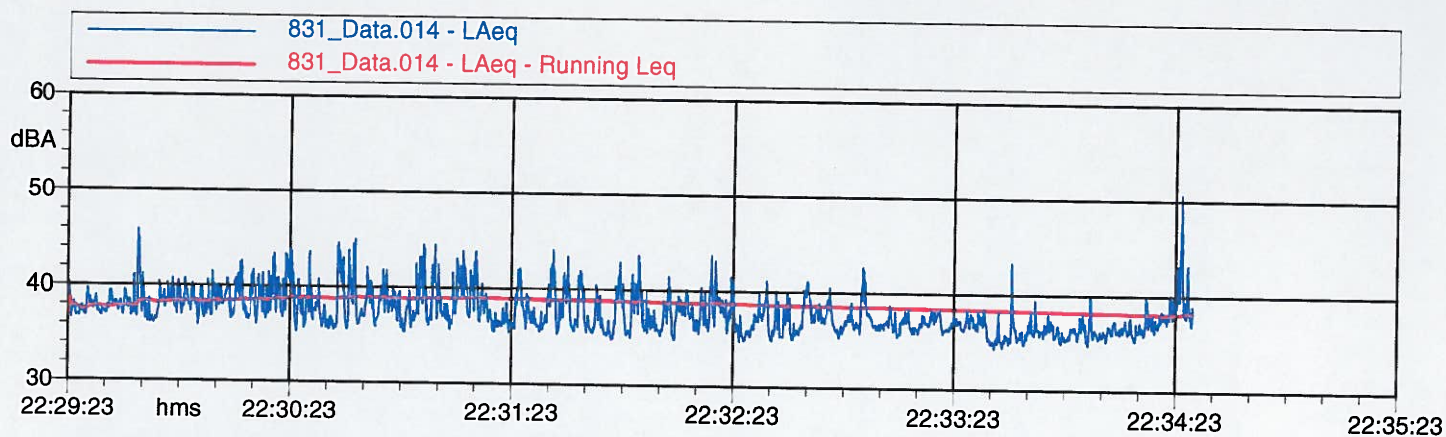
$L_{Aeq} = 46.2 \text{ dB}$



Nome misura: 831_Data.014 - Postazione Pozzo - R0 Notte
Località: Carpignano Sesia
Strumentazione: 831 0002106
Durata misura [s]: 304.6
Data, ora misura: 27/02/2012 22:29:23

L1: 43.6 dBA L5: 41.3 dBA L90: 35.7 dBA
L10: 40.2 dBA L50: 37.3 dBA L95: 35.4 dBA

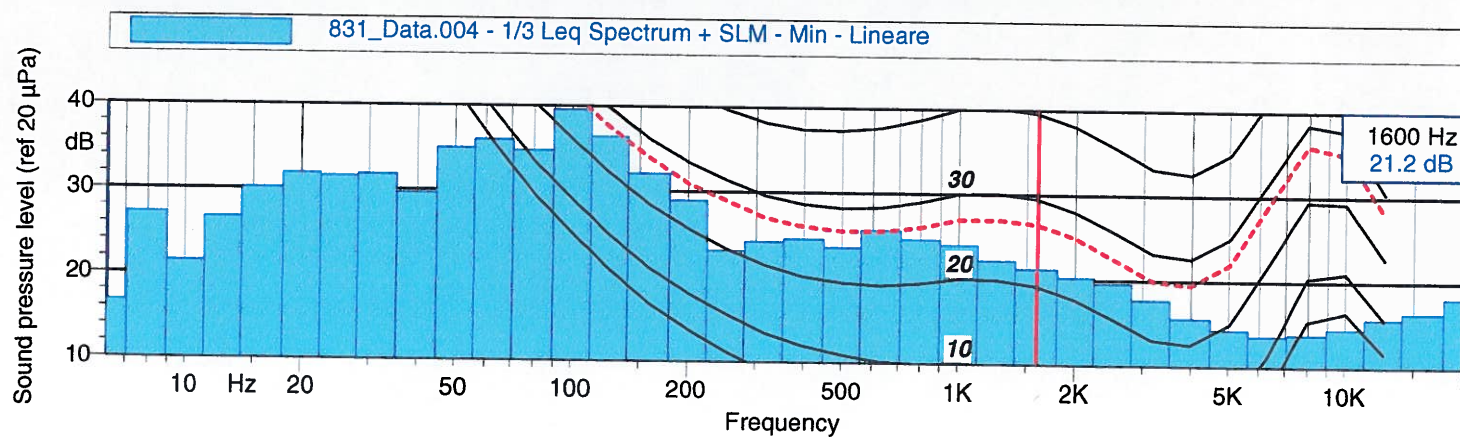
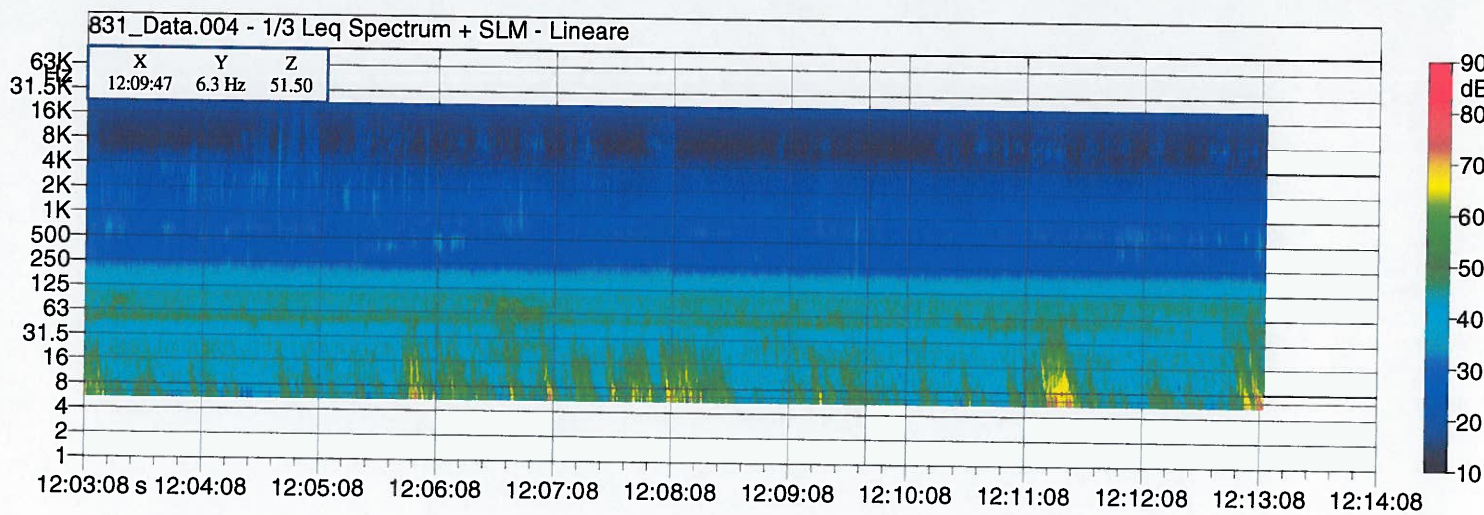
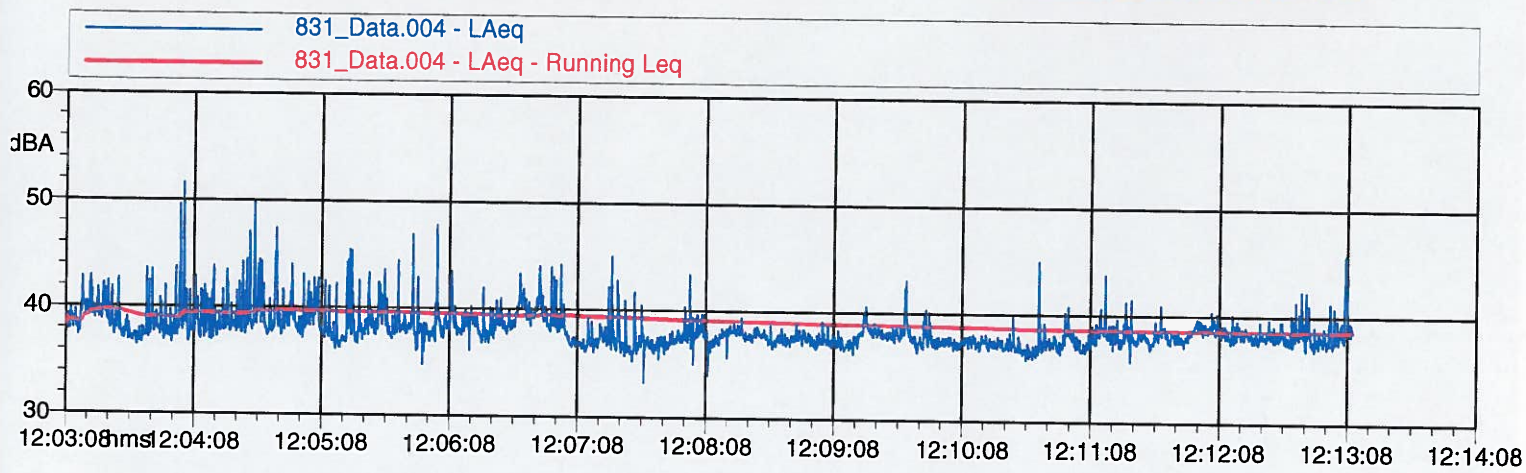
$L_{Aeq} = 38.2 \text{ dB}$



Nome misura: 831_Data.004 - R1
 Località: Carpignano Sesia
 Strumentazione: 831 0002106
 Durata misura [s]: 602.6
 Data, ora misura: 27/02/2012 12:03:08

L1: 43.6 dBA L5: 41.1 dBA L90: 36.9 dBA
 L10: 39.9 dBA L50: 38.0 dBA L95: 36.7 dBA

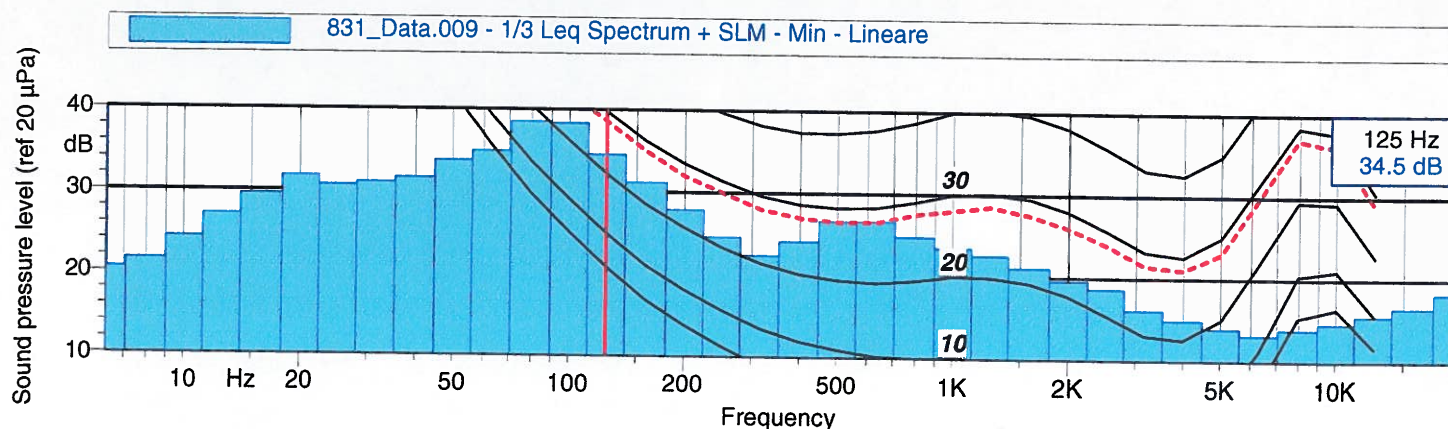
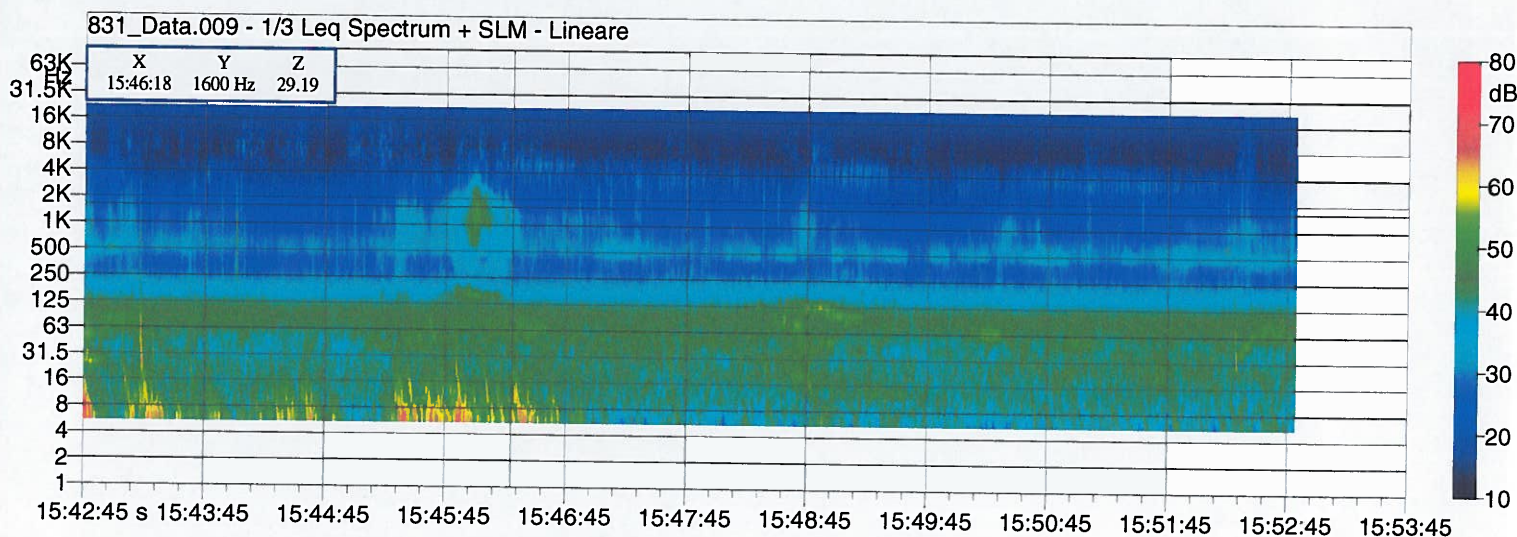
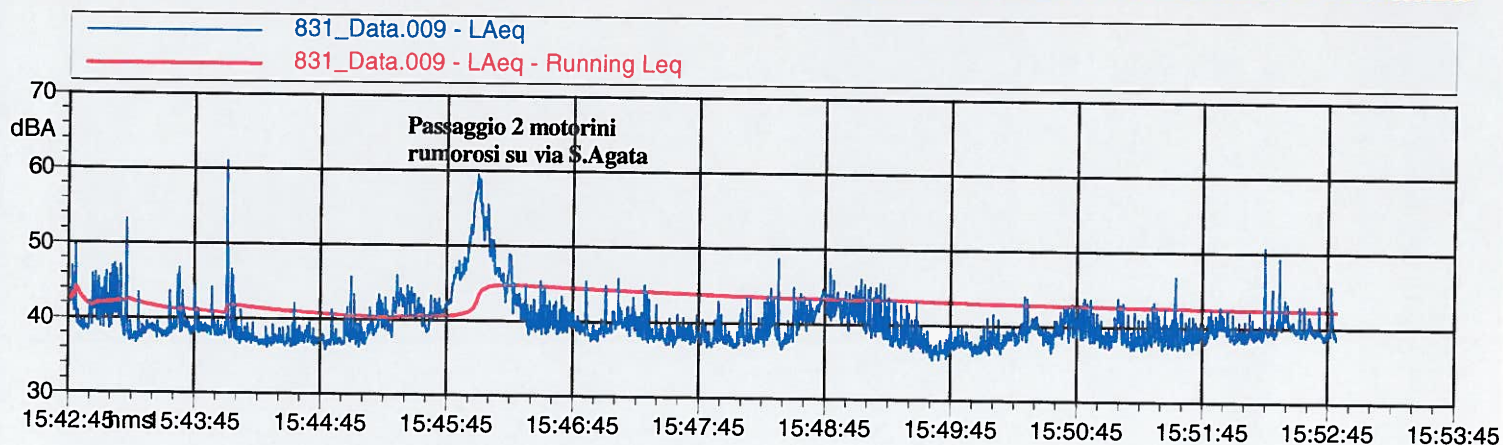
$L_{Aeq} = 38.6 \text{ dB}$



Nome misura: 831_Data.009 - R1
 Località: Carpignano Sesia
 Strumentazione: 831 0002106
 Durata misura [s]: 604.0
 Data, ora misura: 27/02/2012 15:42:45

L1: 53.3 dBA L5: 45.5 dBA L90: 37.3 dBA
 L10: 43.1 dBA L50: 39.1 dBA L95: 36.9 dBA

$L_{Aeq} = 42.2 \text{ dB}$

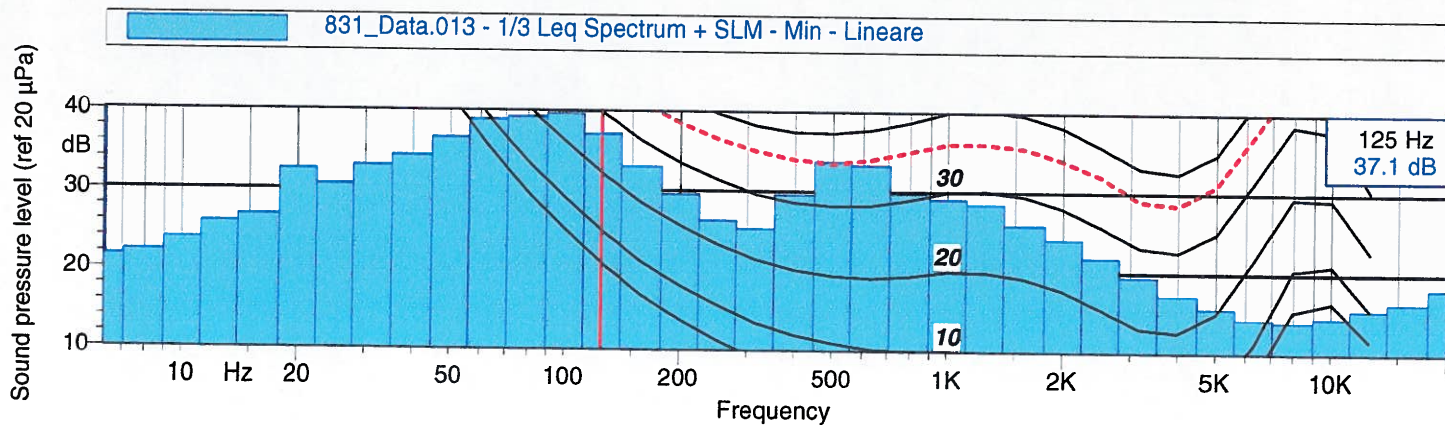
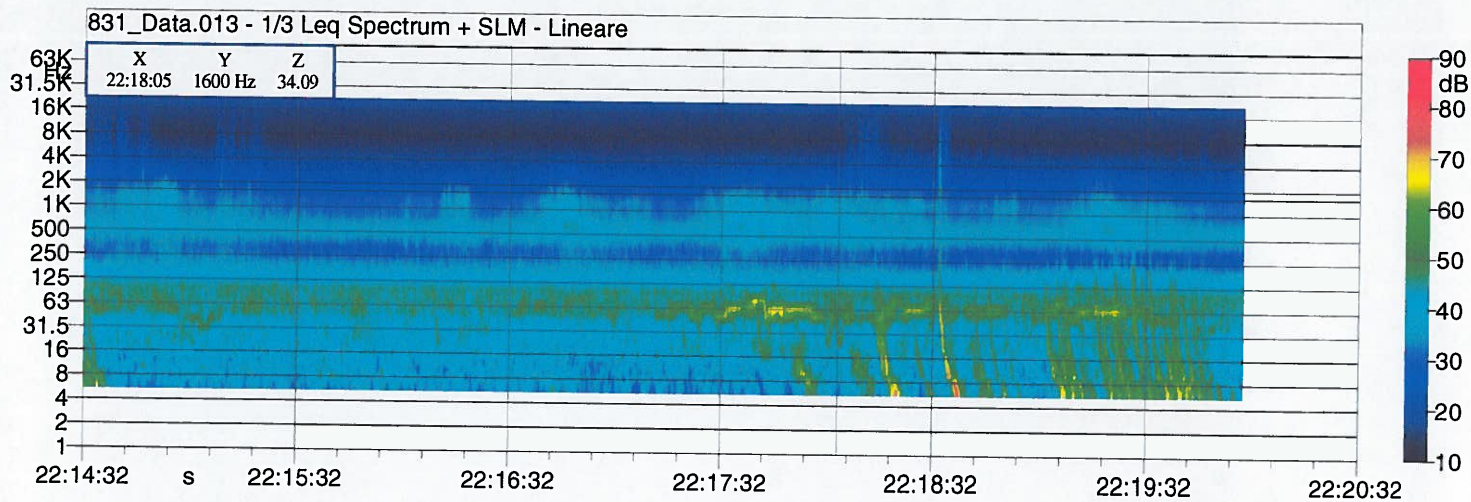
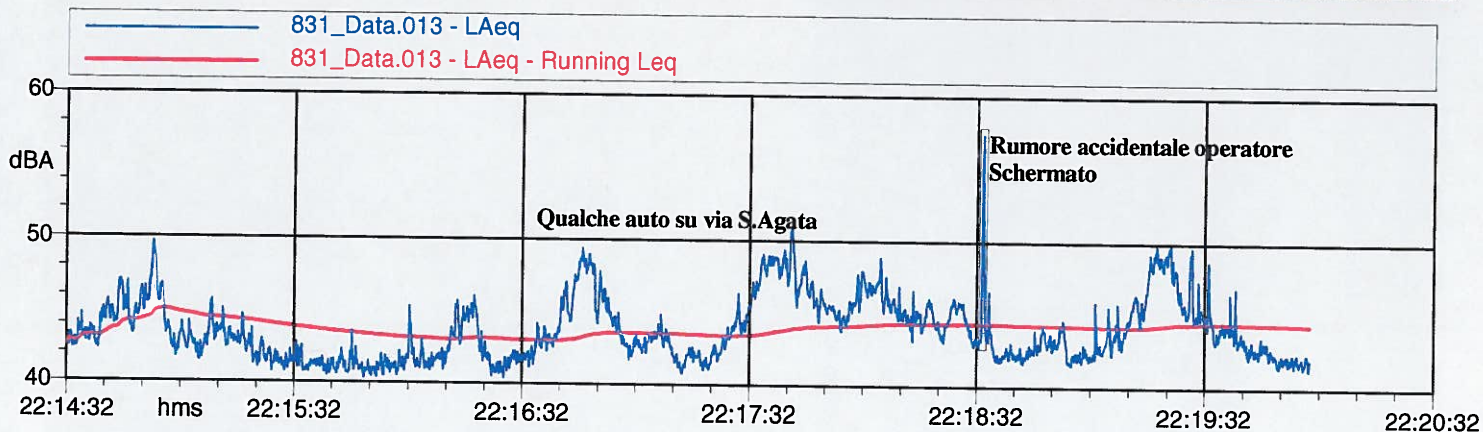


Nome misura: 831_Data.013 - R1 Notte
 Località: Carpignano Sesia
 Strumentazione: 831 0002106
 Durata misura [s]: 327.6
 Data, ora misura: 27/02/2012 22:14:32

L1: 49.2 dBA L5: 48.2 dBA L90: 41.3 dBA
 L10: 47.0 dBA L50: 43.2 dBA L95: 41.0 dBA

$L_{Aeq} = 44.4$ dB

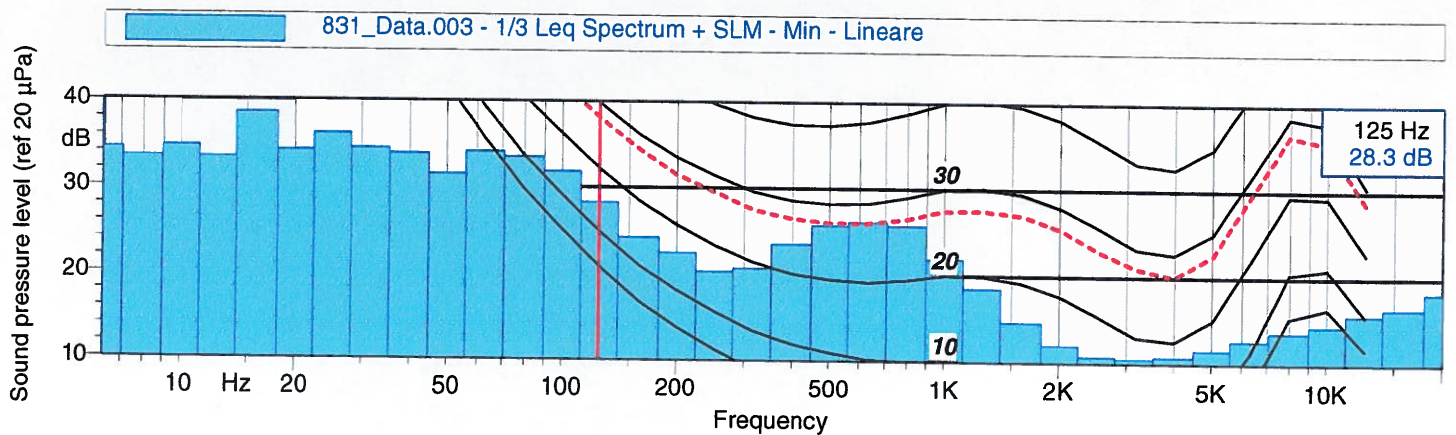
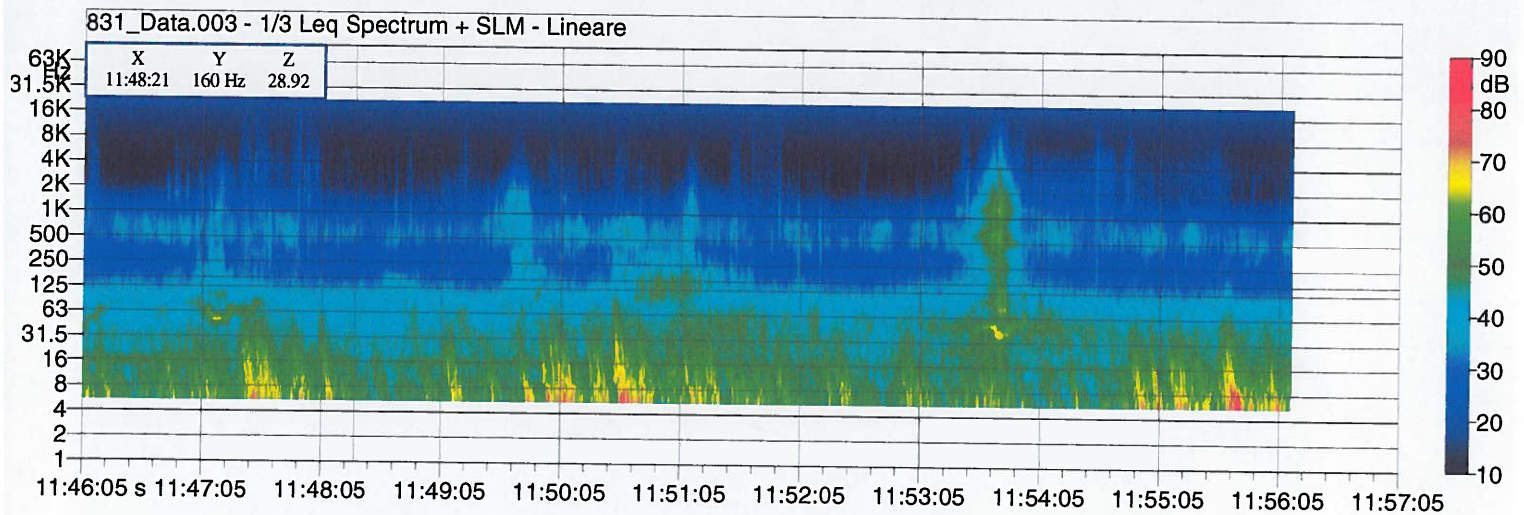
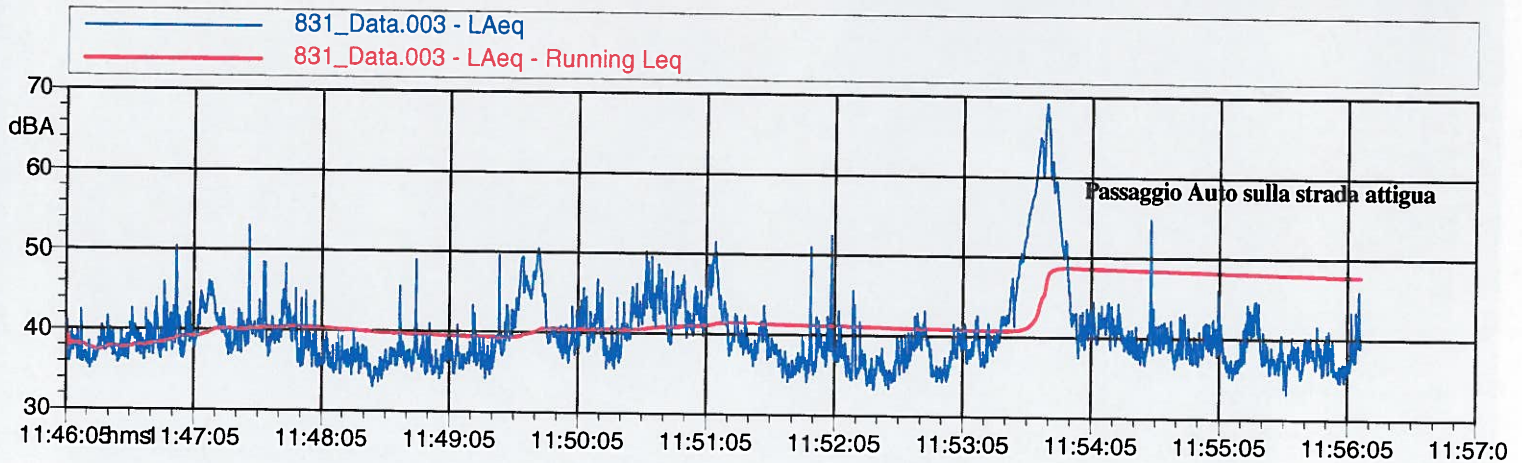
(Non escludendo rumore operatore $L_{Aeq} = 44.4$ dBA)



Nome misura: 831_Data.003 - Case Nuove - R2
 Località: Carpignano Sesia
 Strumentazione: 831 0002106
 Durata misura [s]: 606.2
 Data, ora misura: 27/02/2012 11:46:05

L1: 61.5 dBA L5: 48.3 dBA L90: 35.8 dBA
 L10: 44.8 dBA L50: 38.9 dBA L95: 35.3 dBA

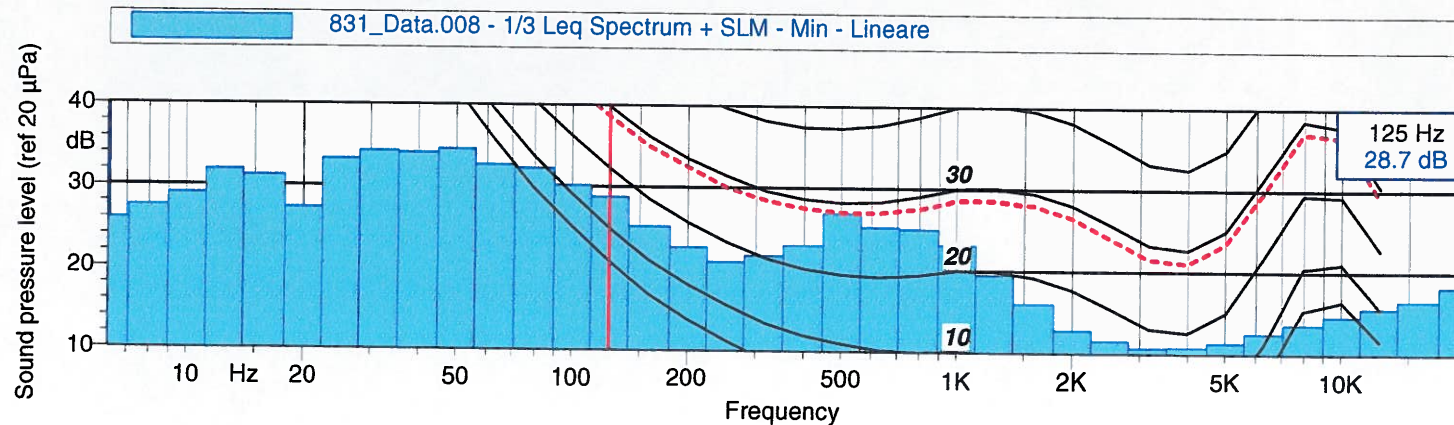
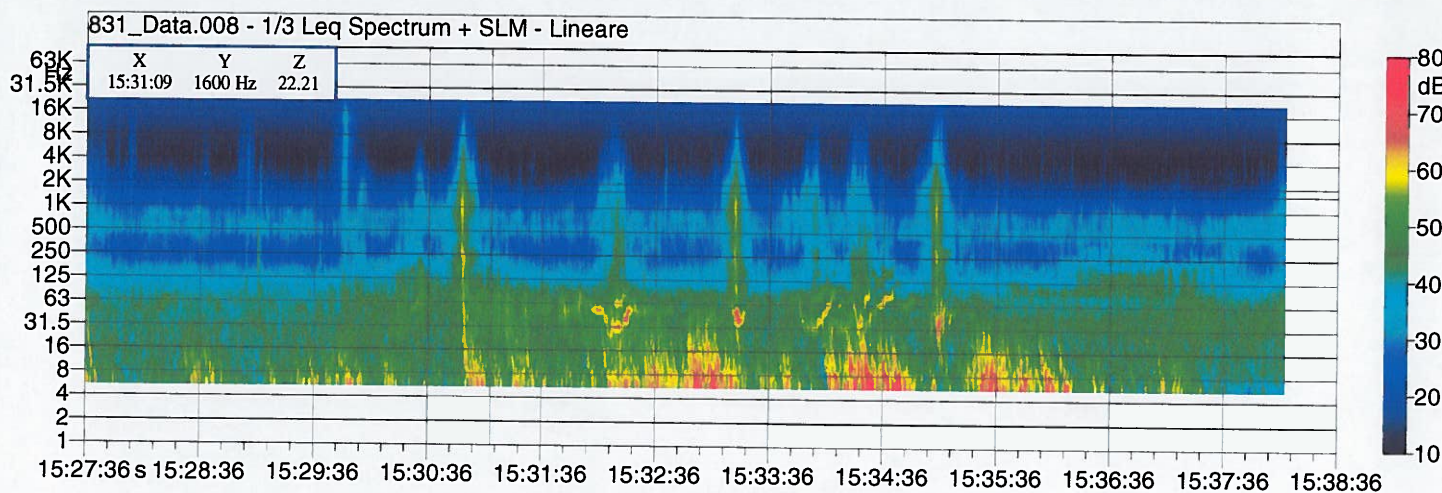
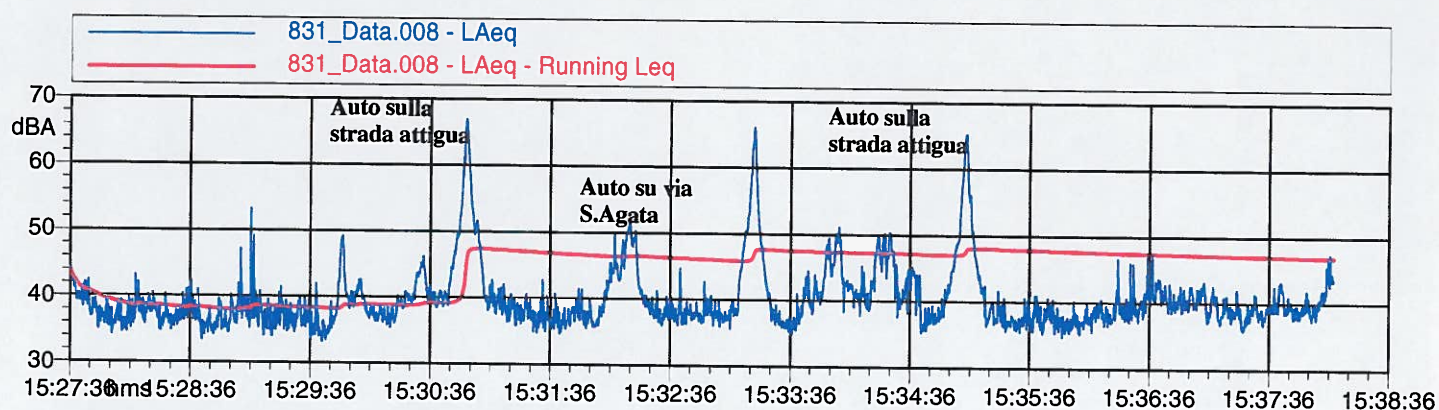
$L_{Aeq} = 47.7 \text{ dB}$



Nome misura: 831_Data.008 - Case Nuove - R2
 Località: Carpignano Sesia
 Strumentazione: 831 0002106
 Durata misura [s]: 632.4
 Data, ora misura: 27/02/2012 15:27:36

L1: 60.7 dBA L5: 49.4 dBA L90: 36.2 dBA
 L10: 45.6 dBA L50: 38.8 dBA L95: 35.6 dBA

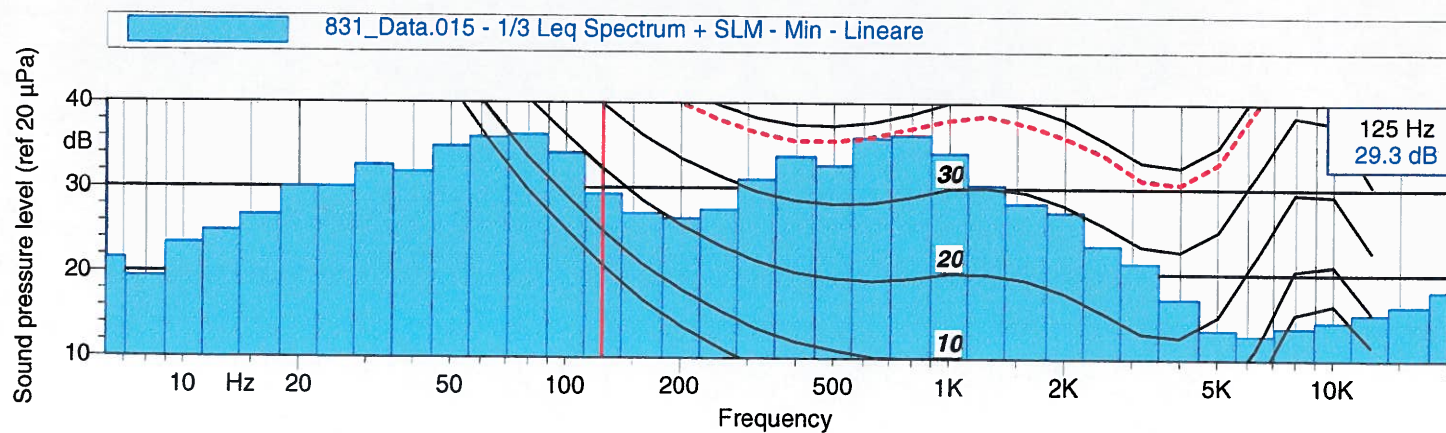
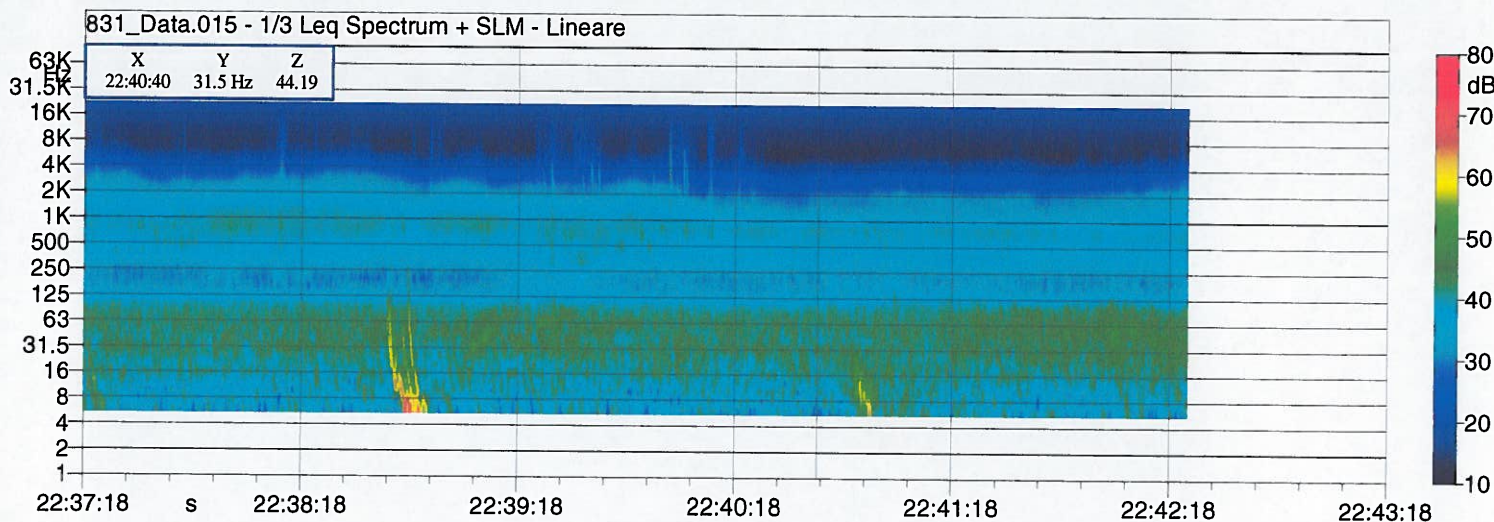
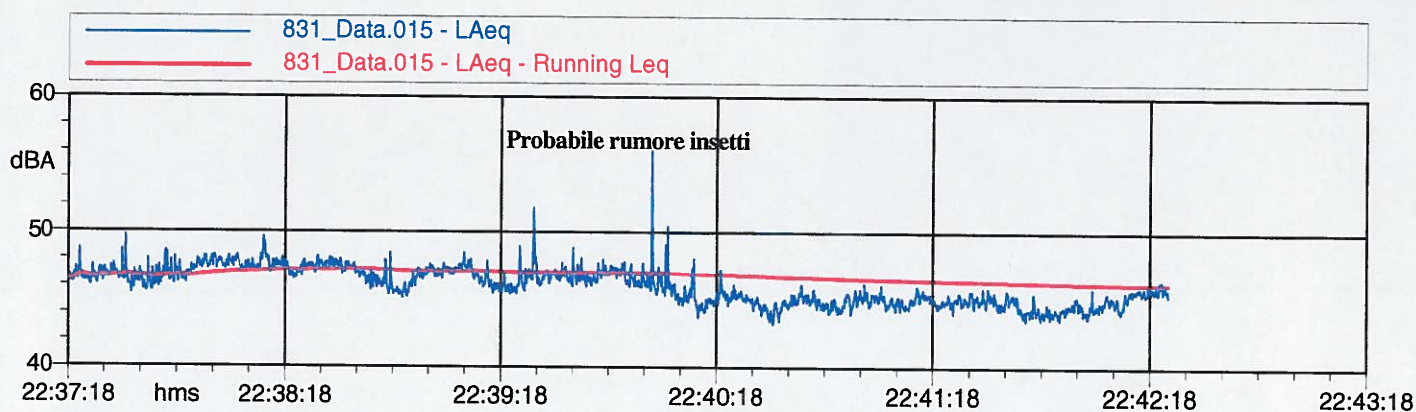
$L_{Aeq} = 46.9 \text{ dB}$



Nome misura: 831_Data.015 - R2 Notte
Località: Carpignano Sesia
Strumentazione: 831 0002106
Durata misura [s]: 305.0
Data, ora misura: 27/02/2012 22:37:18

L1: 48.3 dBA L5: 47.8 dBA L90: 44.4 dBA
L10: 47.5 dBA L50: 46.0 dBA L95: 44.2 dBA

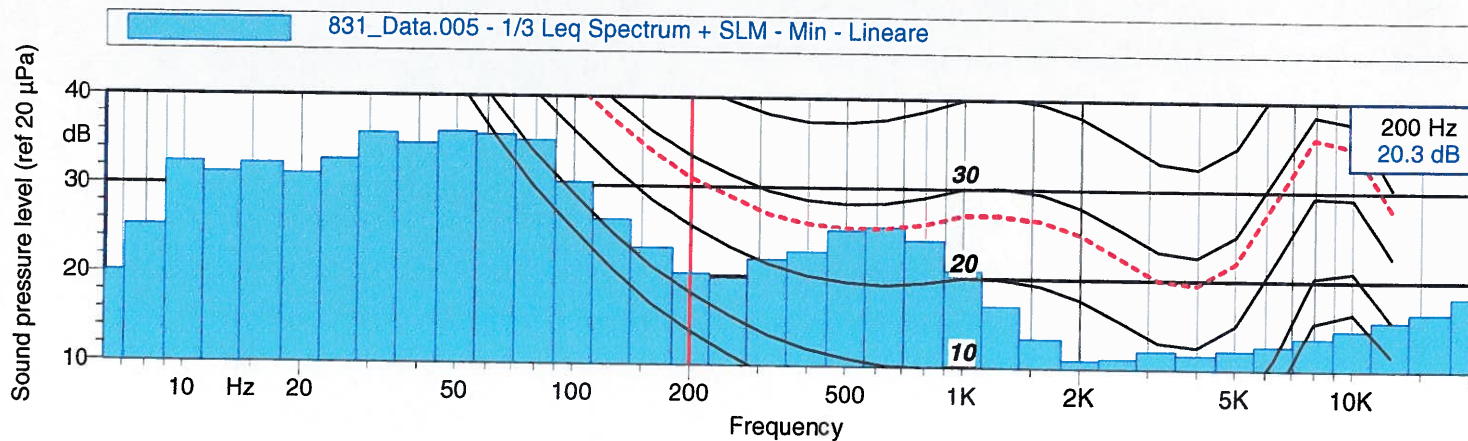
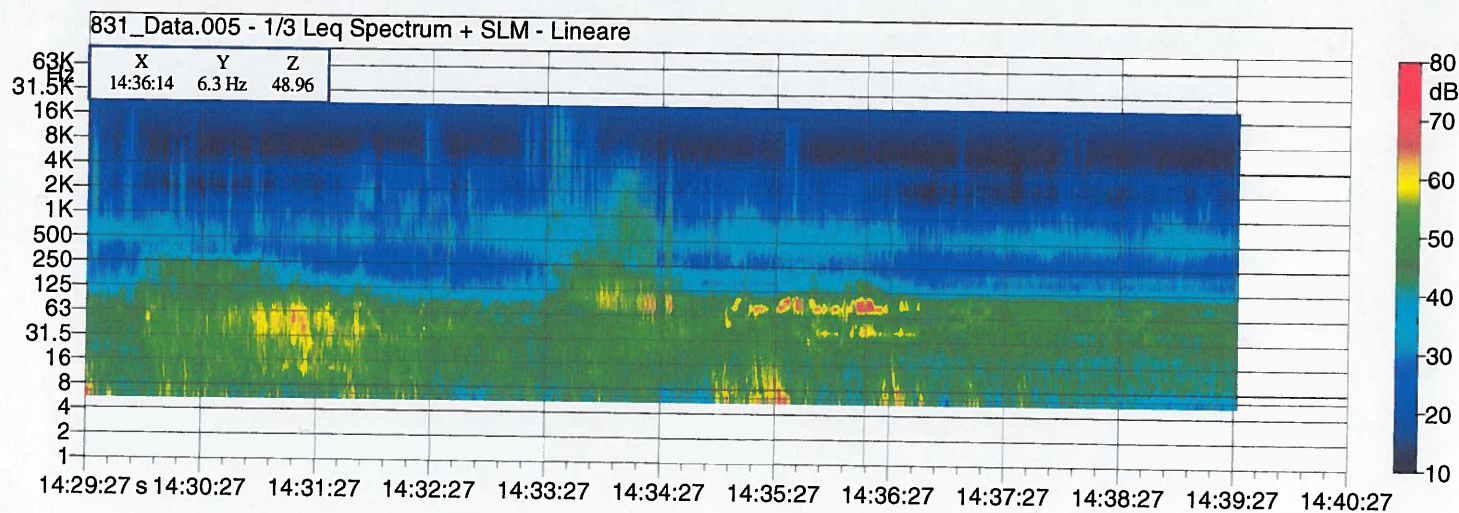
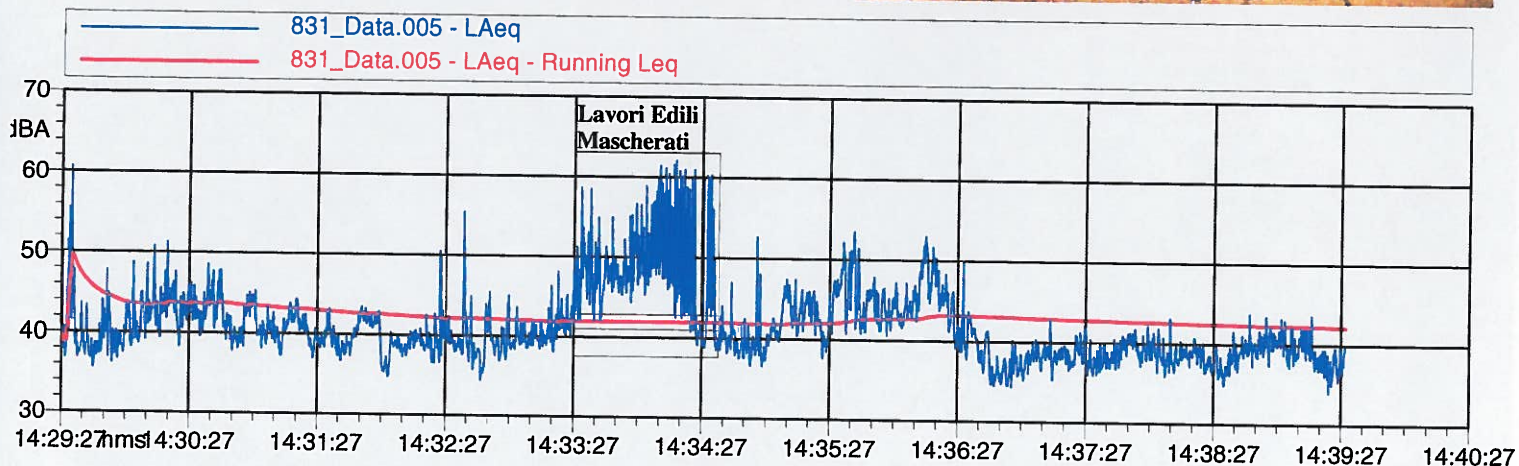
$L_{Aeq} = 46.2 \text{ dB}$



Nome misura: 831_Data.005 - R3
 Località: Carpignano Sesia
 Strumentazione: 831 0002106
 Durata misura [s]: 602.0
 Data, ora misura: 27/02/2012 14:29:27

L1: 50.8 dBA L5: 46.5 dBA L90: 37.3 dBA
 L10: 45.0 dBA L50: 39.9 dBA L95: 36.6 dBA

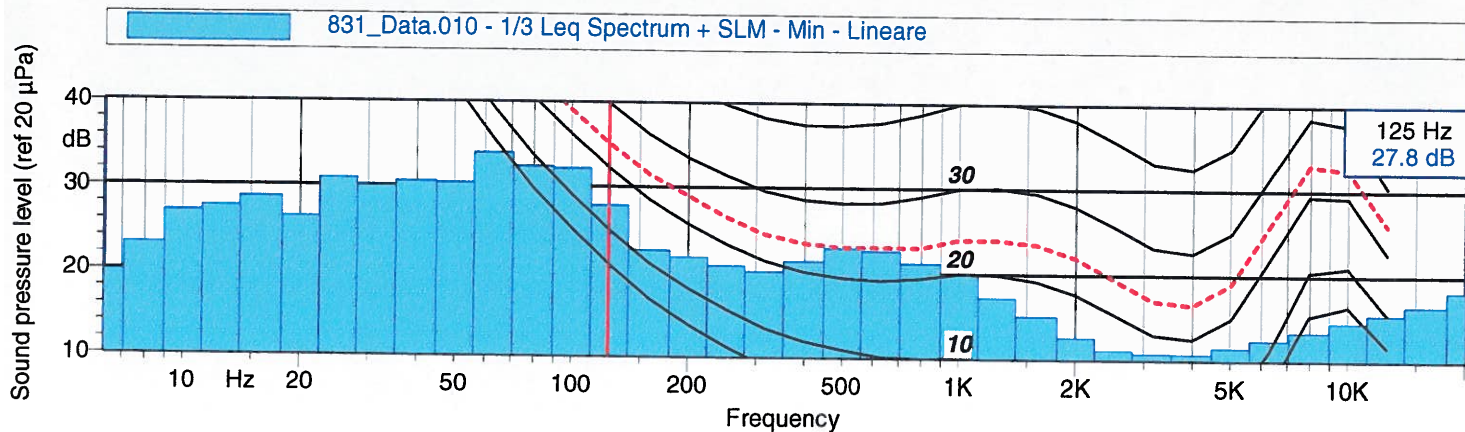
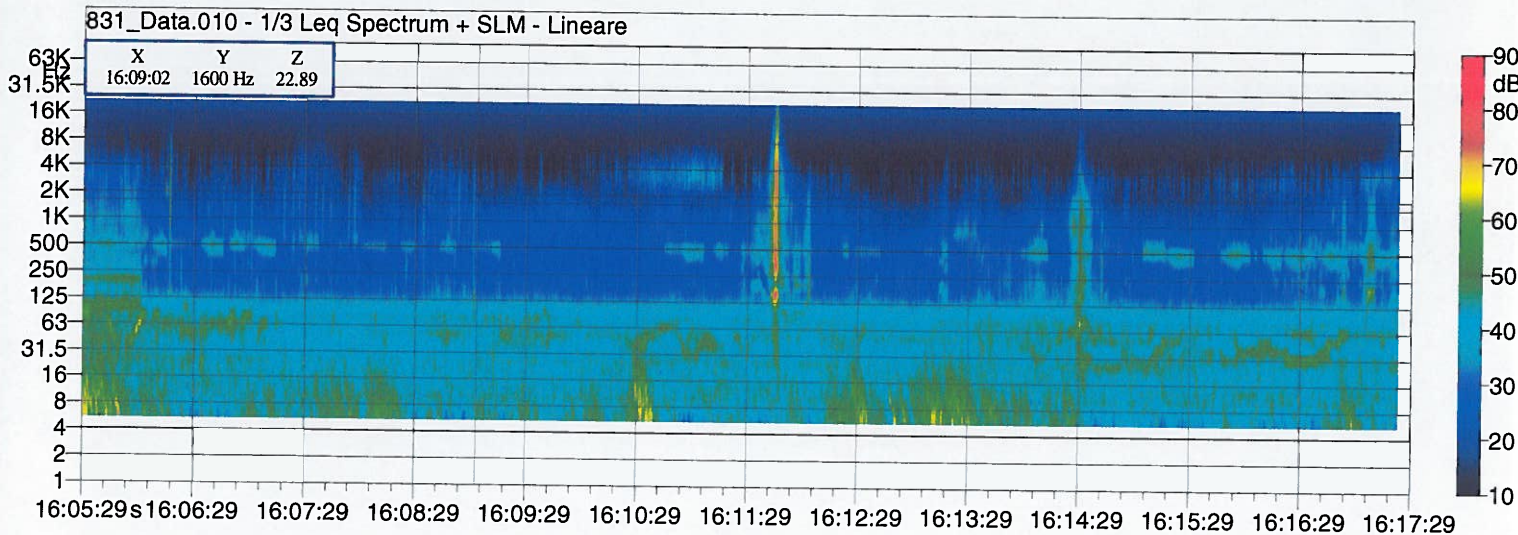
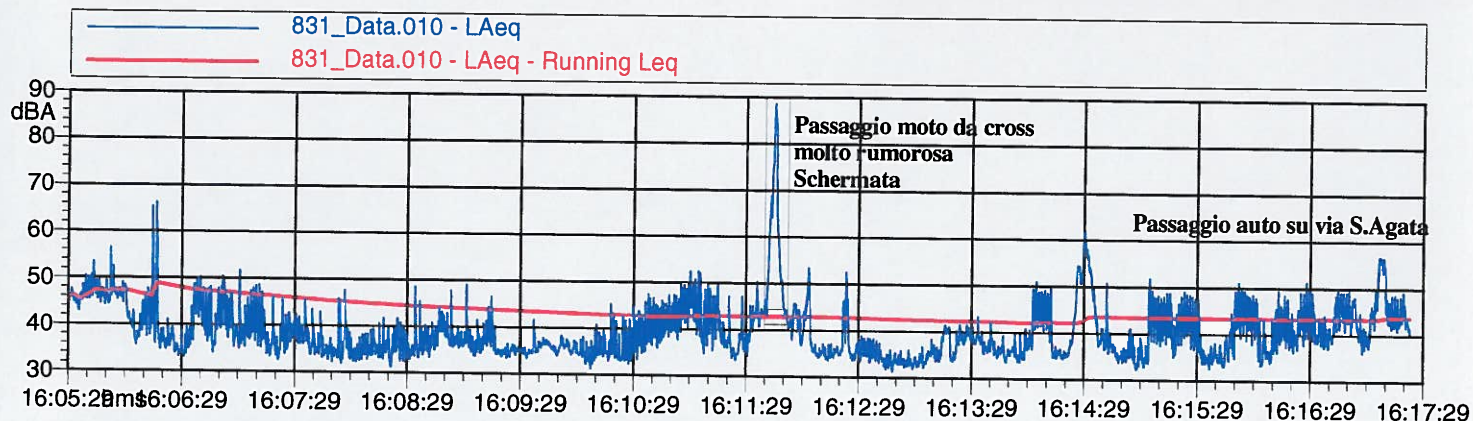
$L_{Aeq} = 42.2$ dB (Non escludendo maschera per attività edili $L_{Aeq} = 45.2$ dBA)



Nome misura: 831_Data.010 - R3
 Località: Carpignano Sesia
 Strumentazione: 831 0002106
 Durata misura [s]: 712.9
 Data, ora misura: 27/02/2012 16:05:29

L1: 54.6 dBA L5: 48.2 dBA L90: 34.2 dBA
 L10: 46.6 dBA L50: 38.0 dBA L95: 33.6 dBA

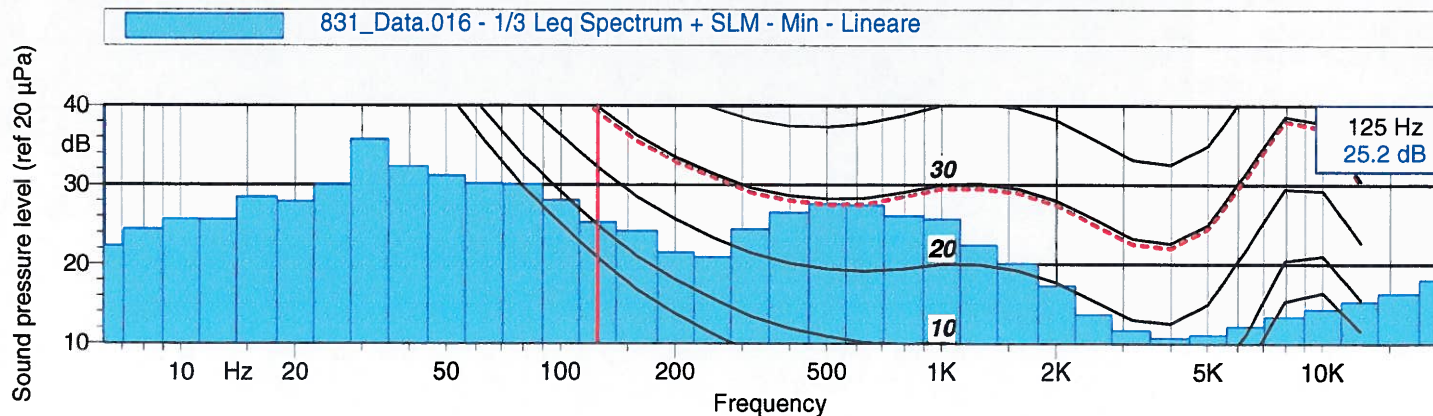
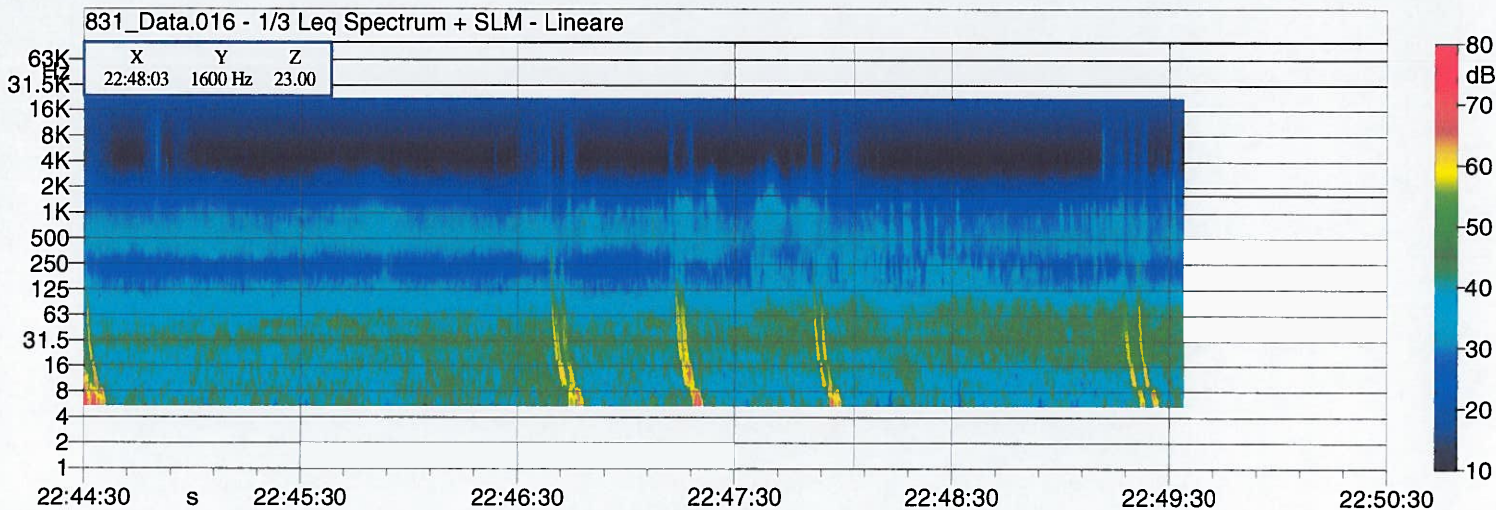
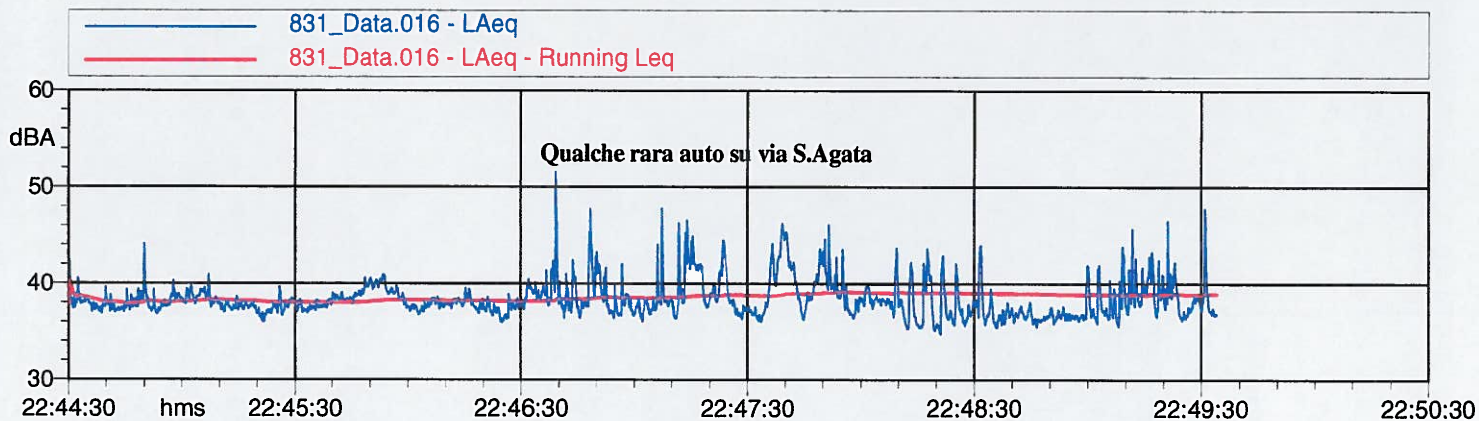
$L_{Aeq} = 43.8 \text{ dB}$ (Non escludendo passaggio moto da cross molto rumorosa $L_{Aeq} = 59.4 \text{ dBA}$)



Nome misura: 831_Data.016 - R3 Notte
 Località: Carpignano Sesia
 Strumentazione: 831 0002106
 Durata misura [s]: 304.0
 Data, ora misura: 27/02/2012 22:44:30

L1: 45.0 dBA L5: 42.3 dBA L90: 36.6 dBA
 L10: 41.0 dBA L50: 37.9 dBA L95: 36.3 dBA

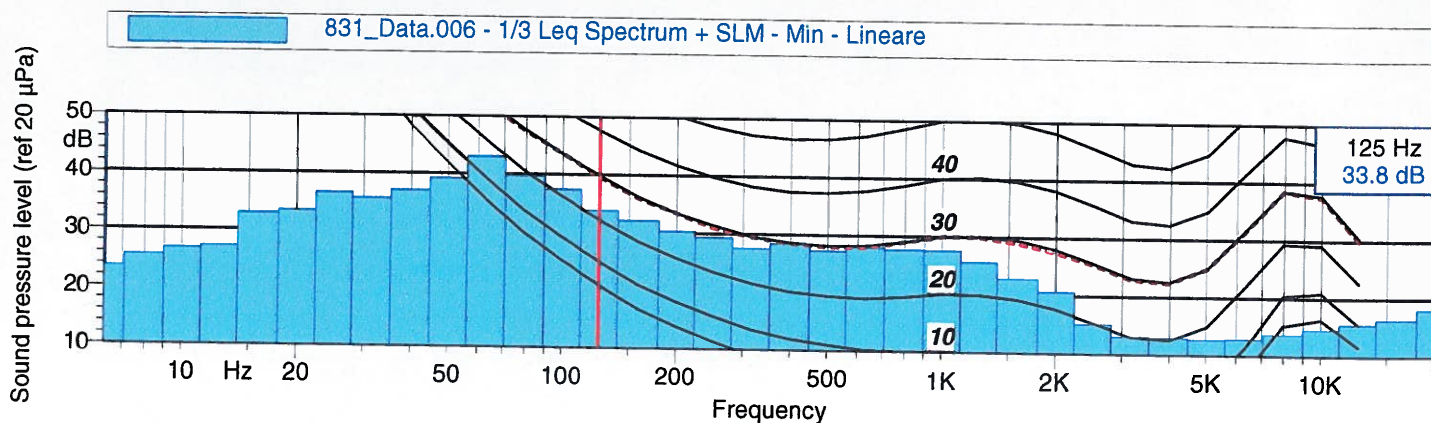
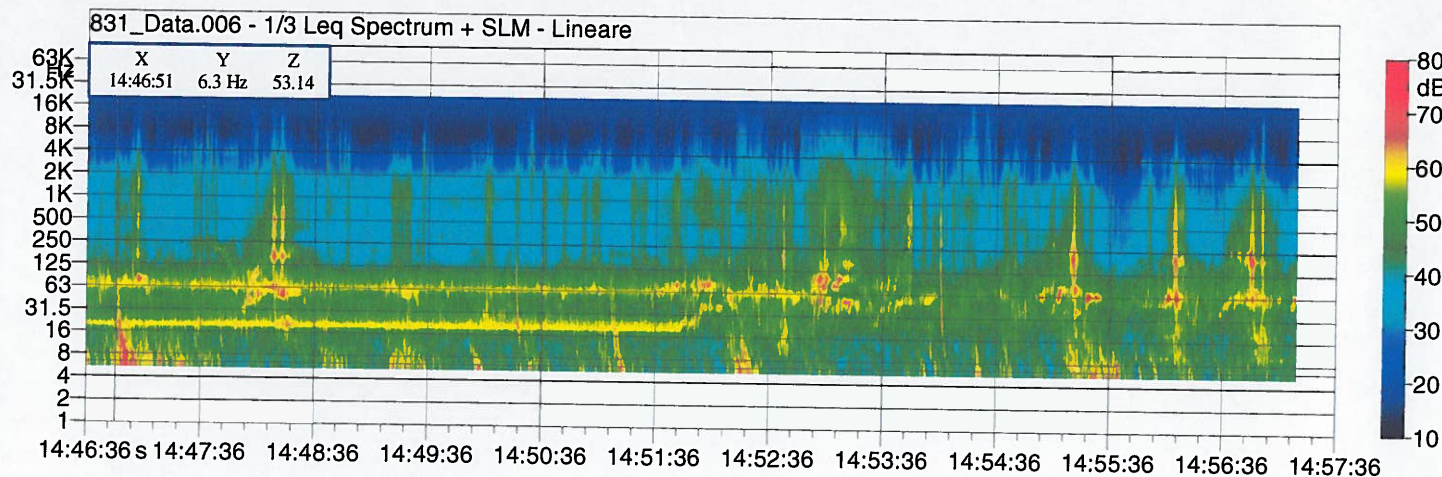
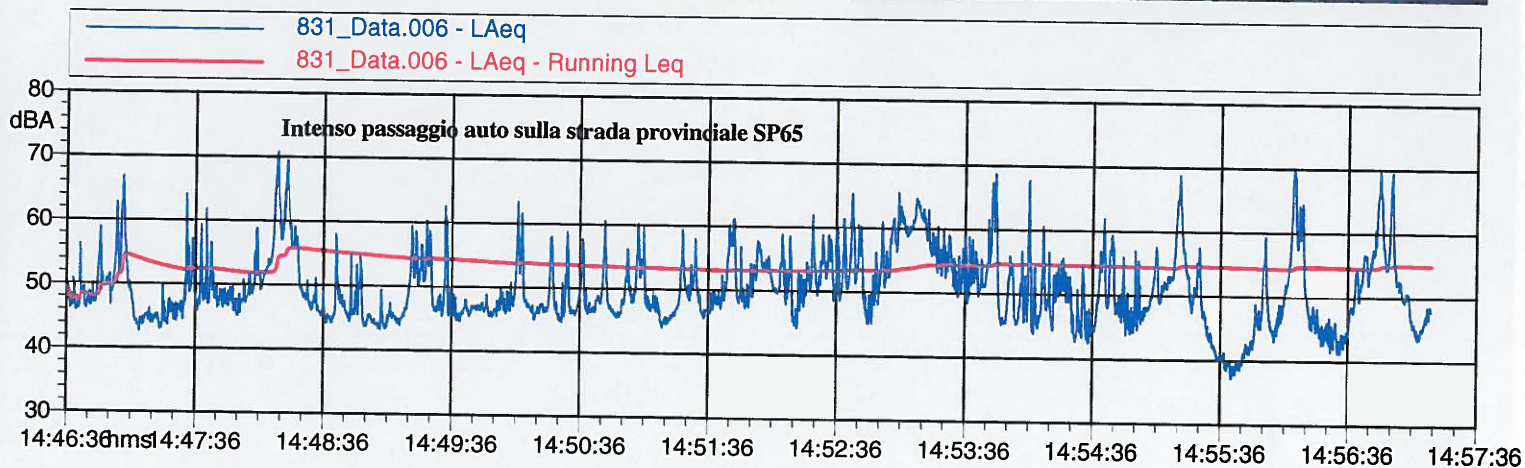
$L_{Aeq} = 38.9 \text{ dB}$



Nome misura: 831_Data.006 - R4
 Località: Carpignano Sesia
 Strumentazione: 831 0002106
 Durata misura [s]: 638.9
 Data, ora misura: 27/02/2012 14:46:36

L1: 66.3 dBA L5: 60.9 dBA L90: 44.6 dBA
 L10: 58.1 dBA L50: 48.8 dBA L95: 43.6 dBA

$L_{Aeq} = 54.9 \text{ dB}$

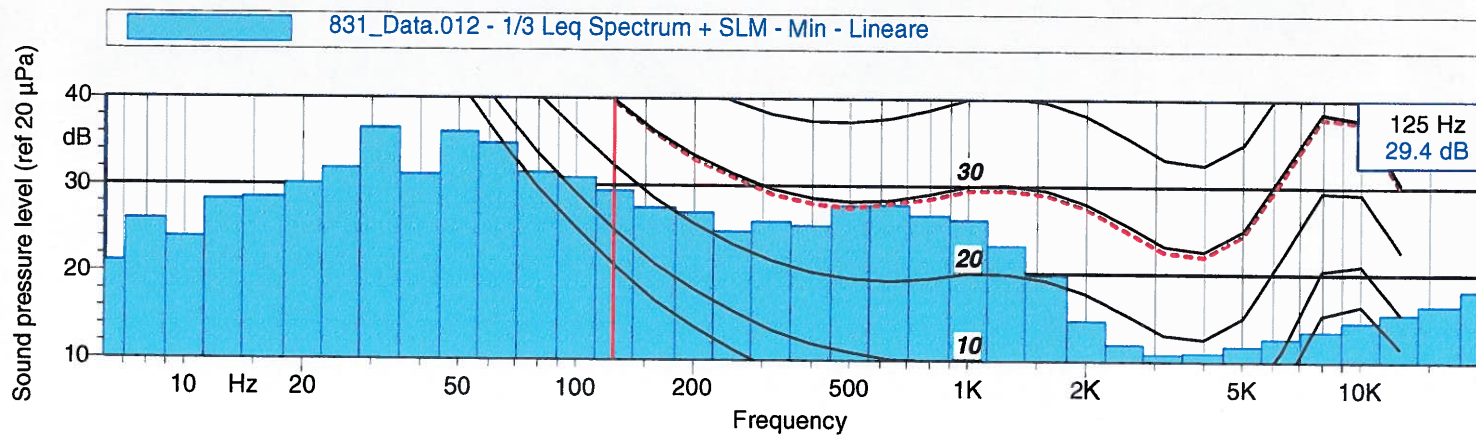
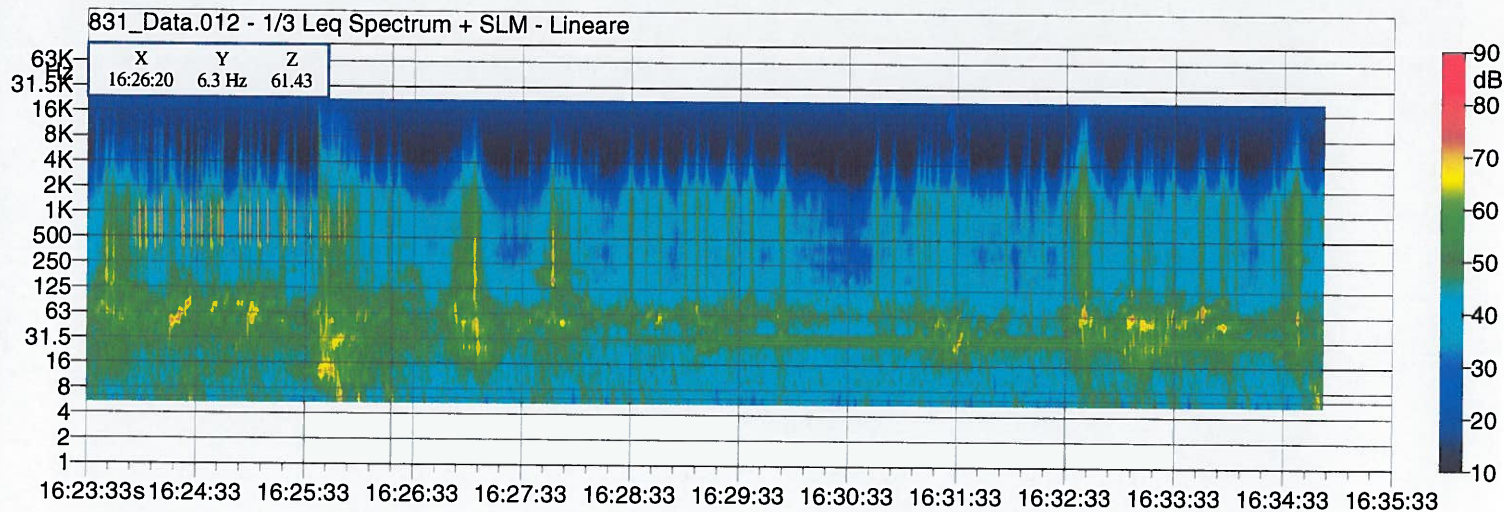
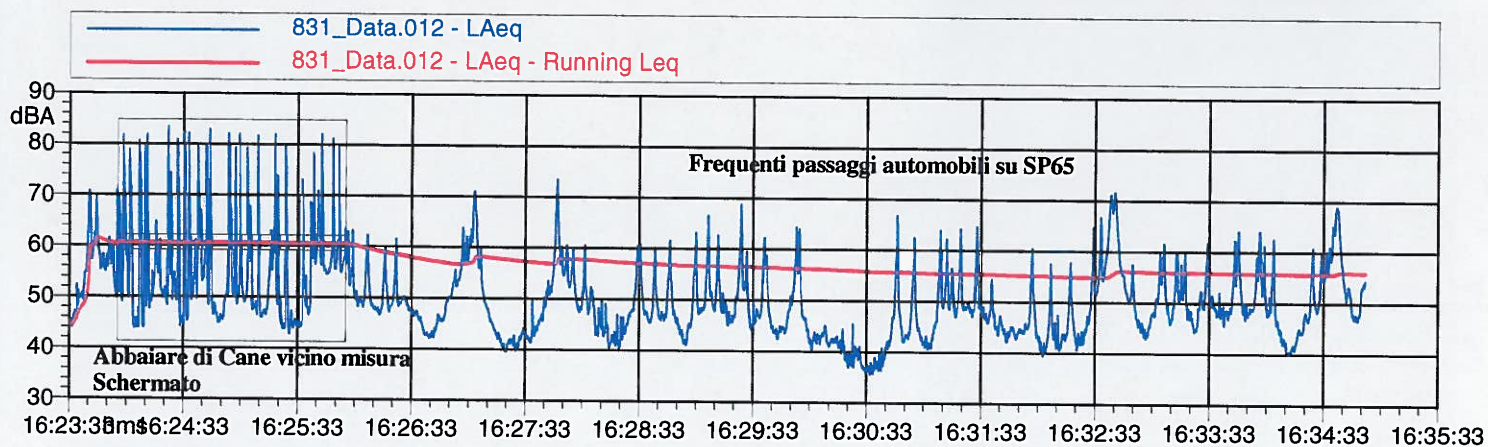


Nome misura: 831_Data.012 - R4
 Località: Carpignano Sesia
 Strumentazione: 831 0002106
 Durata misura [s]: 682.1
 Data, ora misura: 27/02/2012 16:23:33

L1: 68.8 dBA L5: 61.9 dBA L90: 41.7 dBA
 L10: 58.7 dBA L50: 48.0 dBA L95: 40.5 dBA



$L_{Aeq} = 56.0$ dB (Non escludendo abbaiare di cane, $L_{Aeq} = 62.2$ dBA)



Nome misura: 831_Data.017 - R4 Notte
 Località: Carpignano Sesia
 Strumentazione: 831 0002106
 Durata misura [s]: 313.3
 Data, ora misura: 27/02/2012 23:00:54

L1: 60.5 dBA L5: 55.0 dBA L90: 44.4 dBA
 L10: 52.7 dBA L50: 47.7 dBA L95: 42.5 dBA

$L_{Aeq} = 50.4 \text{ dB}$

